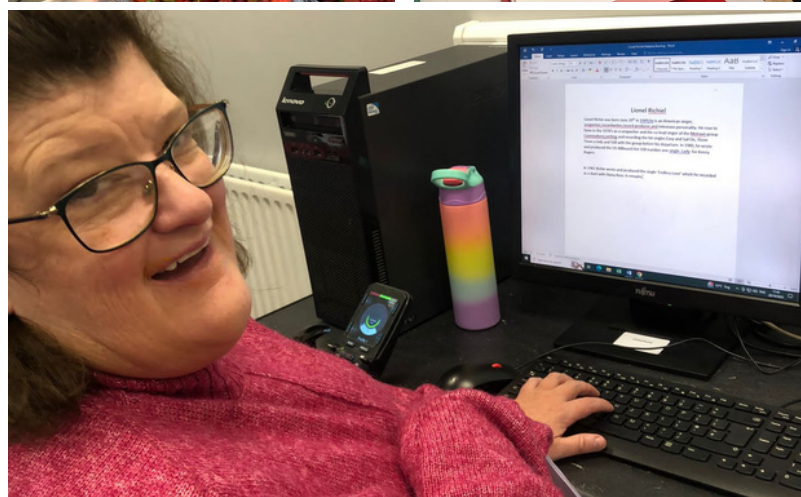
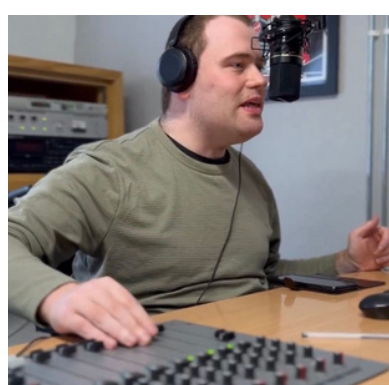


SOS Kilkenny CLG

Impact Report

20
23





An Overview

173 people supported

332 employees

35 community based homes

7 Day Locations

700+ personal outcomes identified

90% compliant with HIQA regulations

24 external training providers engaged

21,000 hours delivered by support services team

5 Board of Directors Meetings Held

1433 Risk Assessments entered on DMS

6 Funders

13 external regulators

Supported Community Homes



Overview:

SOS Kilkenny supports 78 people in our designated centres, located in neighbourhoods throughout Kilkenny City and County.

Impact:

11 HIQA
Inspections

76 HIQA
regulations
tested

11 people
moved to
more suitable
homes.

Testimonial:

"Caroline Ormond is very proud of her new home which has provided a nice quiet place for her to live, without the distraction of the everyday hustle and bustle of a busier house. Caroline has excelled in her new home, completing life skills daily such as cooking, washing and drying clothes - a massive achievement for her.

As the manager of Park Avenue, the difference I can see in all residents is unbelievable and also the new, more suitable environment has impacted the staff team in a very positive way."

Chris Clancy



Education



Overview:

SOS Kilkenny recognises that education is essential for people to progress both personally and professionally. Learning and developing new skills are at the core of all of our programmes, for both the people we support and our staff teams.

Impact:

79 people supported engaged in training with KCETB

10 people trained in barista skills

1497 hours of staff training delivered.

Testimonial:

"I love to make coffee! My favourite part was learning how to make a cappuccino. (Being a barista) makes me feel happy!"

Alannah Murray

Alannah participated in the ETB Barista Skills training course this year.



Community Engagement



Overview:

SOS Kilkenny supports people to be active and valued members of their local community everyday, as employees, students, volunteers and customers.

Impact:

31 people
contributing
to the Nature
Nurture
project

31 people
using public
transport

€1.3m+
spent in the
local
economy.

Testimonial:

"I work in the St. Vincent De Paul Charity Shop every Friday morning. The staff there are the nicest people you could meet. Volunteering is important to me because I can help other people who don't have as many luxuries. I am proud to help people who really really need it, especially at Christmas. You should do as much as you can to help people."

Merrie Bergin



Overview:

Work4Life is SOS Kilkenny's employment support programme. Work4Life supports people to find, maintain and progress in paid meaningful employment in their chosen field.

Work4Life is approved by Government with support from the Dormant Accounts Fund.

Impact:

35 people supported to secure and maintain paid employment.

57 Employers Engaged.

€74,000 earned in wages by employees supported

Testimonial:

"I love my job and I am very happy in Paulstown"

Declan Kealy

In 2023, Declan undertook a work placement in Applegreen in his homeplace of Paulstown. Following the placement, Declan was offered a paid position there and now works every Friday.





Dreamtime Studio Hub



Overview:

Dreamtime Studio Hub is SOS Kilkenny's media centre, teaching broadcasting, podcasting, photography and film-making.

Impact:

1440 hours
of radio
broadcast by
Dreamtime
Radio

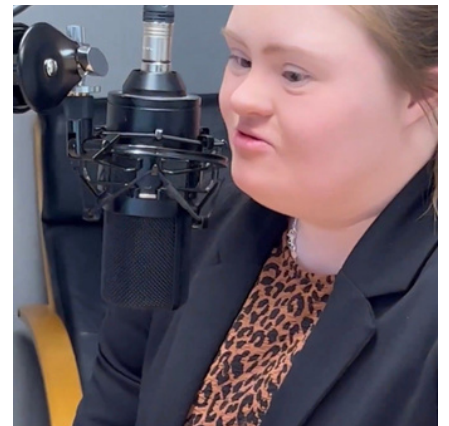
1
appearance
on RTE's
Nationwide

3 people
creating content
for Kilkenny City
Community
Radio

Testimonial:

"Being a presenter is an all-round great job for me, finding the best songs out there can be difficult, but it's a great experience. I started off prerecording but with help from staff over the years I am now fully independent and present my shows live. It is a great honour to be part of Dreamtime studio"

Gemma Haire



Notable Moments



This year, we partnered with Kilkenny County Council on the **Nature Nurture Project** where plants grown in Bloom School of Horticulture will be given to schools, preschools and after schools who commit to the biodiversity project.

In November, we won the “Investment in Skills, Training and Development of Staff at the **Kilkenny Chamber Business Awards**. We were also shortlisted for a HSE Excellence Award and a Zero Project Award.

In December, we launched **The Access Academy** - a bespoke education and training programme teaching industry relevant and recognised skills for employment.

In February, Dreamtime Radio was featured on **RTE’s Nationwide**.

In December, we were awarded funding by Pobal through the Workability Programme to continue our **Work4Life** programme for 5 years.

NOTABLE MOMENTS



In May, SOS Kilkenny held 4 **Staff Information Sessions** in the Hoban Hotel which were attended by **180** staff members.

The **Your Say Advocacy Committee** was established with 6 members.

SOS Kilkenny opened **Park Avenue**, an innovative approach to providing housing for adults with intellectual disabilities and autism. This is a specialised project where both the internal and external environment specifically complement the sensory profile of the person living there, increasing their wellbeing.

Our **Callan Road campus** was refurbished, enhancing fire safety and accessibility.

We began our Lean journey with 9 staff members completing **Lean Yellow Belt Training**. Funding has been secured to train a further 18 people in 2024.



SOS Kilkenny CLG

Administration & Training Centre,
Kells Road,
Kilkenny.

056-7764000

www.soskilkenny.com

